



WEARIC

WEARIC - EXPANSION BOARD DATASHEET

PRODUCT DESCRIPTION

Interested in making your own smart textiles? The "Wearic - Smart Textiles KIT" is the world's first do it yourself package with textile sensors. Plug and play - a Nano microcontroller connected with the wearic expansion board and textile sensors. It was never so easy to make your own innovative sensor textile and wear it. From heated cloth to weight measurement in chairs, there are no limits to your creativity and your projects - Do it!



PRODUCT COMPATIBILITY

The Wearic Expansion Board is compatible with a Nano V3.0 Atmel Atmega328 microcontroller. Using 15mm snaps you can connect all Wearic Sensors, or your own sensor textiles, easily with the Nano controller. The expansion board converts the sensor signal for the controller and you can focus on programming your application.

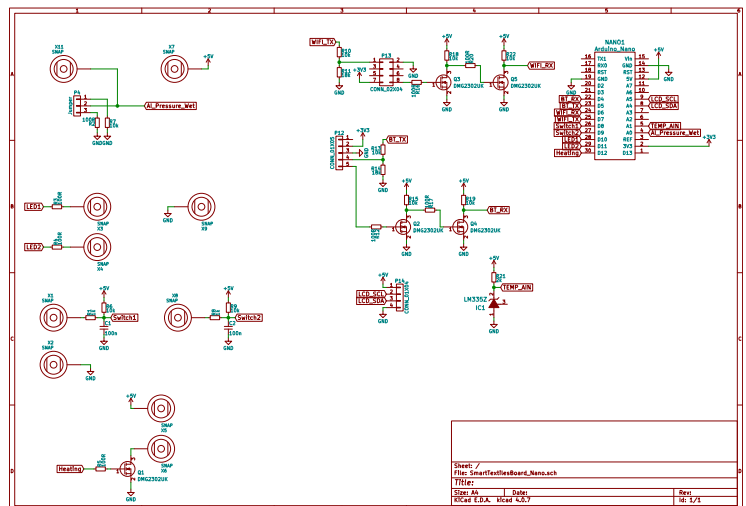
Following sensors are compatibel with the WEARIC Expansion board and available in our Online-Shop:

- WEARIC LED textile
- WEARIC textile pressure sensor
- WEARIC textile pushbutton double
- WEARIC textile heating
- WEARIC textile wetness sensor

TECHNICAL DETAILS: EXPANSION BOARD

Size	90 x 70mm
Connectors	10 Snaps (15mm s-spring)
Analog Input	1 (Pressure, Wetness)
Analog Output	1 PWM (Heat)
Digital Input	2 (Push Button)
Digital Output	2 (LED)
Voltage Supply	5V DC
Max. Current	600 mA DC
Extensions	Display, Bluetooth
Additional Sensors on the PCB	Temperature

CIRCUIT DIAGRAM



DOWNLOADS

More informations, datasheets, PCB Layout, circuit diagrams, etc. you can find them in our download section on www.wearic.com